

1 FLOOR PLAN
NOT TO SCALE

NOTES

POWER & DATA COORDINATION
The customer has the responsibility to have this drawing reviewed by their electricians and telephone/data communications installers prior to the actual furniture installation to determine the extent of potential re-wiring required.

FIELD VERIFICATION REQUIRED
OpenSquare will not be responsible for variations in building plan dimensions occurring as a result of actual construction dimension variances which may affect the placement of furniture and equipment.
FIELD VERIFICATION IS REQUIRED PRIOR TO ORDERING FURNITURE.

DRAWING PROPRIETY & OWNERSHIP
The furniture selection and layout of this drawing are property of OpenSquare and may not be distributed or conveyed to third parties without written permission from OpenSquare.

ARCHITECTURAL WALL
OpenSquare will provide detailed drawings including "typical" seismic bracing details. Project specific bracing details and structural engineered calculations details are not included but may be added for a fee, pending verification of ceiling/plenum conditions. Seismic bracing and structural engineering fees are not included pending verification of building conditions.

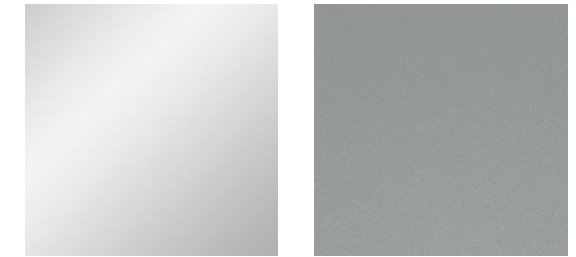
COVID - 19
OpenSquare is following guidance provided by the CDC and WHO regarding COVID-19 and how to best mitigate risks. While physical space considerations such as furniture design, specification, and space planning are an important part of the solution for a healthy and safe environment, they are most effective when combined with a holistic approach. Including: Environmental controls (ventilation, filtration, physical separation, cleaning regimen) Administrative controls (policies, procedures, best practices), and personal protective equipment (mask, gloves, ect.)

EGRESS
For aisle clearance less than 44" or 36" on single aisle access. Reduced aisle widths shown are not recommended for this application by OpenSquare. The customer has the responsibility for review and acceptance of the layout prior to order and any subsequent physical changes required based on jurisdictional requirements.

REDUCED CLEARANCE
For distances less than 42" from a work surface to another work surface, furnishings, wall or aisle. Reduced Seat clearance as shown on drawing is not recommended by OpenSquare. The customer has the responsibility for review and acceptance of layout prior to order.

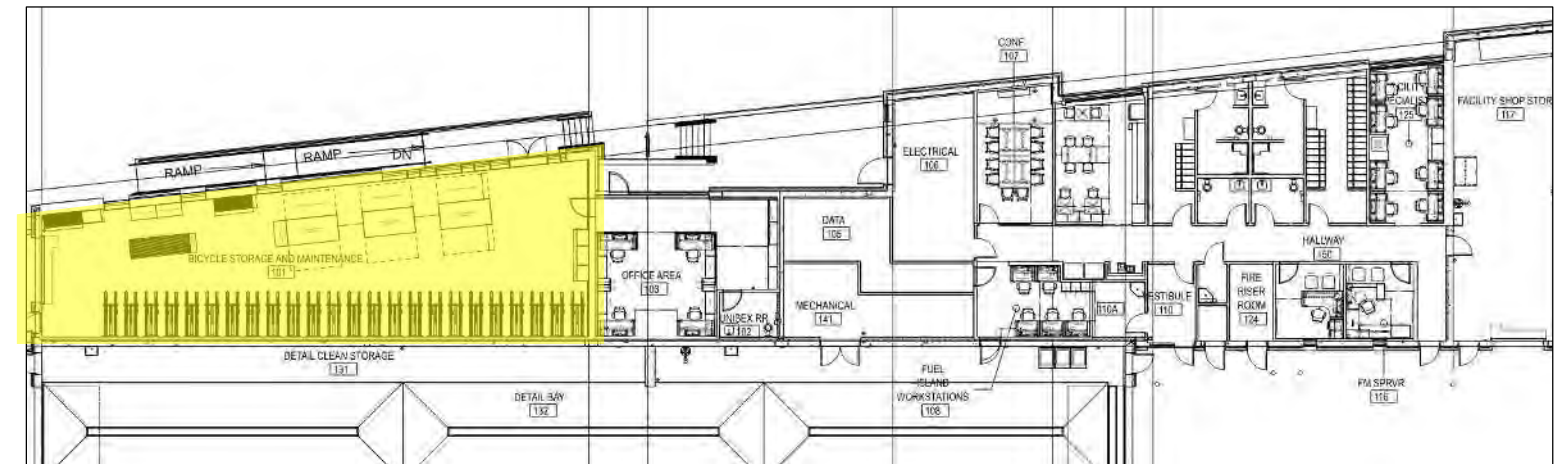
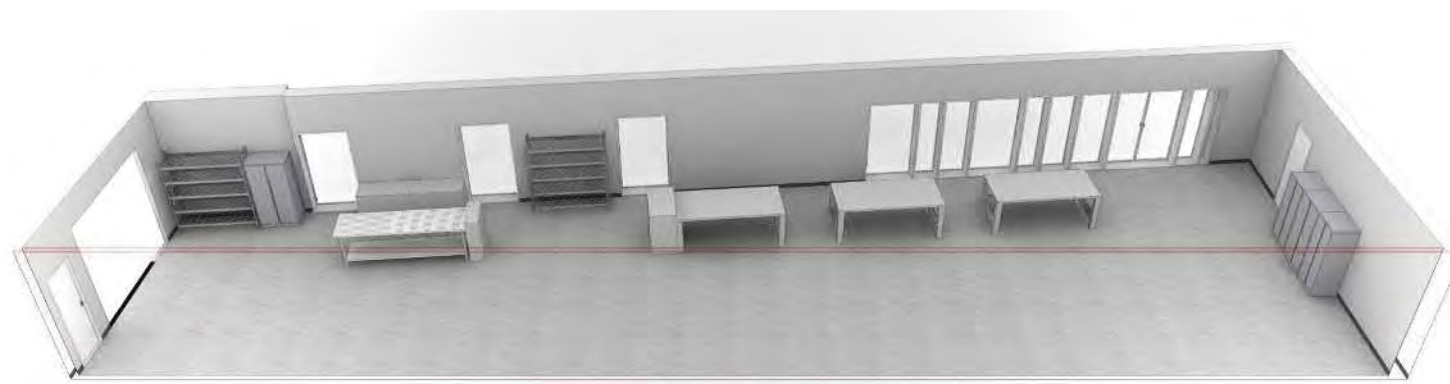
PERMITTING
Submittal and Payment for all permits and all associated fees are the responsibility of the Client and their consulting Architect and General Contractor.

INTERCITY TRANSIT, PATTISON EXPANSION
 FUEL WASH FACILITIES BLDG 1ST FL | BICYCLE STORAGE 101



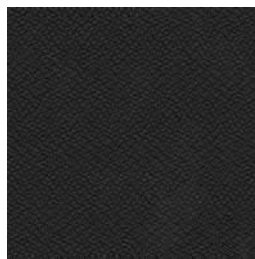
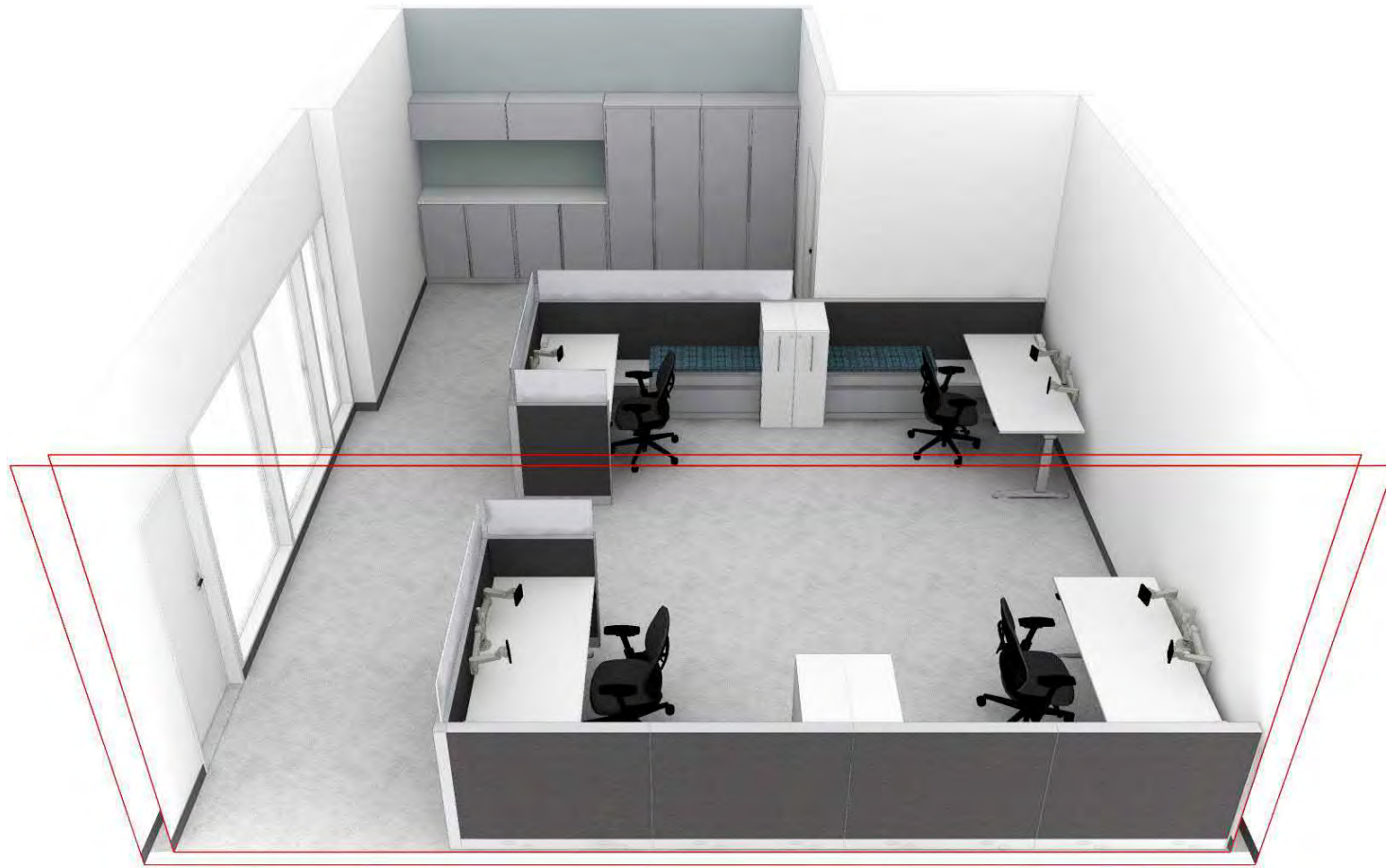
POLISHED CHROME

PLATINUM METALLIC



MANUFACTURER	PRODUCT	QUANTITY	DESCRIPTION	MATERIAL(S)
STEELCASE	UNIVERSAL STORAGE CABINET	4	<ul style="list-style-type: none"> • 65-1/2H • (2) 36W • (2) 30W • FLUSH STEEL FRONT • 4 ADJUSTABLE SHELVES • STD 1" STEEL TOP • LOCK: SPECIFIC / KEY PLUG / FR SERIES 	<ul style="list-style-type: none"> • PAINT: PLATINUM METTALIC 4799 • LOCK: POLISHED CHROME 9201
SAFCO	BOLTLESS STEEL AND PARTICLE BOARD SHELVING UNITS	4	36x24	

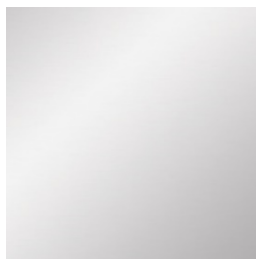
INTERCITY TRANSIT, PATTISON EXPANSION
 FUEL WASH FACILITIES BLDG 1ST FL | OFFICE AREA 103



LINK, BLACK



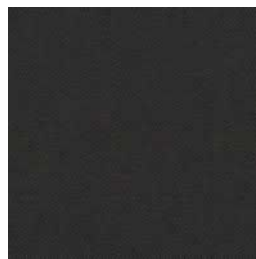
PLATINUM METALLIC



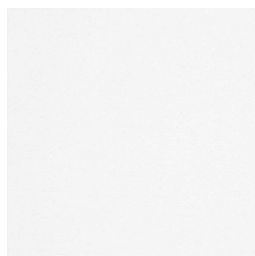
POLISHED CHROME



TACK CLOTH, GROTTA



GAMUT, CARBON



ARCTIC WHITE

Product Line: UNIVERSAL LATERAL CUSHION TOP

Pattern	Grade	Default Direction	Horizontal	Vertical	Contains FR	Firecode (CAL TB133)
TACK CLOTH	6	V	Pass	Pass	N	None

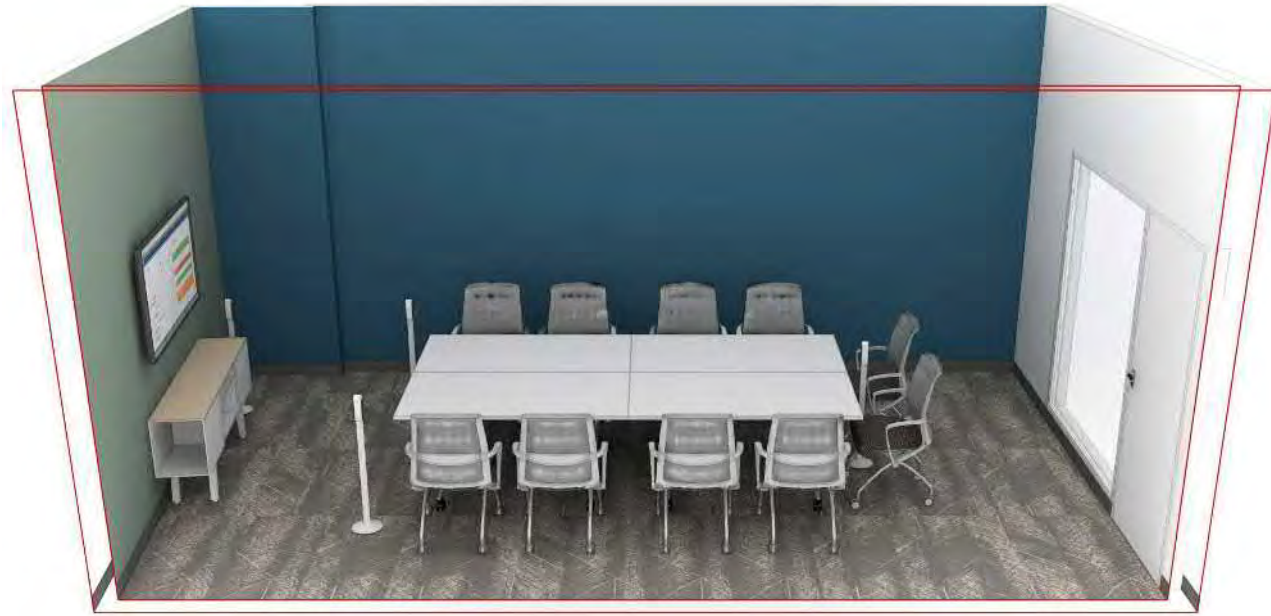
Product Line: ANSWER PANEL

Pattern	Grade	Horizontal	Vertical	UL
GAMUT UNFINISHED	2	Pass with exceptions	Pass with exceptions	Pass

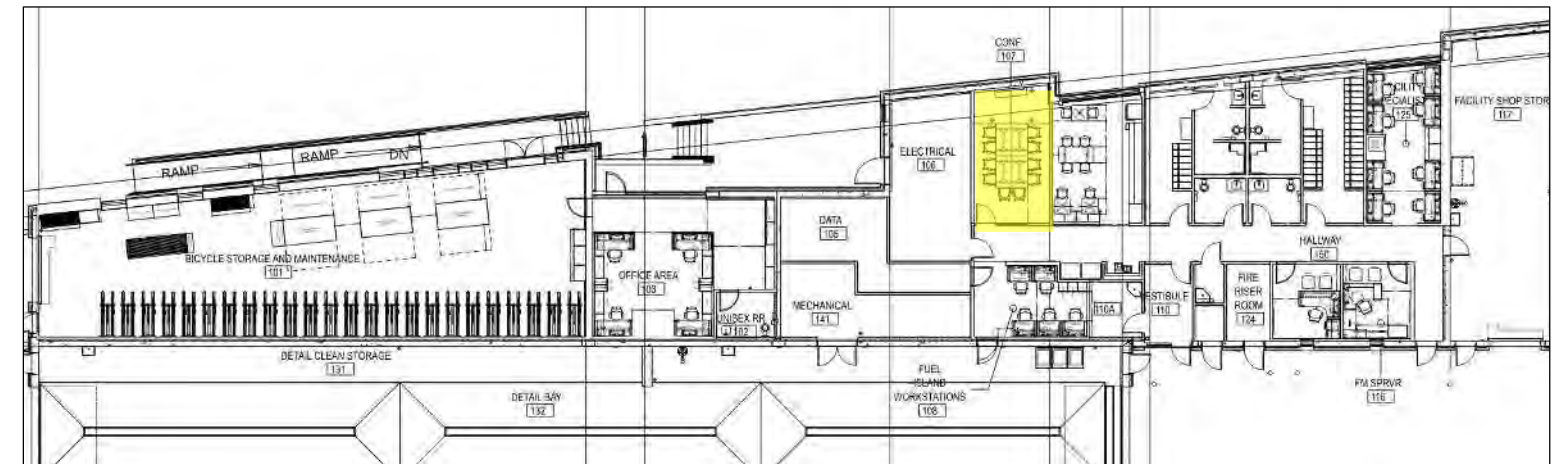
NOTE: GAMUT PASSES WITH EXCEPTIONS. EXCEPTIONS REVIEWED AND CONFIRMED – DOES NOT AFFECT SELECTED PATTERN.

PRODUCT	DESCRIPTION	MATERIAL(S)
ANSWER PANELS, THIN TRIM	<ul style="list-style-type: none"> FRAMELESS GLASS 12”H, RECESSED BASE TRAY: YES (ON POWERED PANELS) CABLE TRAY: NO BASE: STD KNOCKOUT BOTH SIDES POWER: 3+1 (LINE 4 CONTROLLED STAMP) RECEPTACLE QUANTITY: 2 PER STATION 	<ul style="list-style-type: none"> FABRIC SKIN: GR.2 DESIGNTEX, GAMUT, CARBON 3468-812 (HORIZONTAL) PAINT: PLATINUM METALLIC 4799 GLASS: FROSTED RECEPTACLES: PLATINUM SOLID BASE INFEED: PLATINUM SOLID
POWERSTRIP PLUS, C-CLAMP	<ul style="list-style-type: none"> CONFIGURATION: 3 PWR / 2 USB-A 1 UTILITY PWR BLOCK 6’ STD POWER CORD / WITH PVC STANDARD NEMA 5-15 3-PRONG PLUG 	<ul style="list-style-type: none"> PLASTIC FINISH: ARCTIC WHITE 6009 CORD: BLACK
CF SERIES, C-CLAMP, DYNAMIC DUAL MONITOR ARM	<ul style="list-style-type: none"> WEIGHT SUPPORTED: 5-17LBS / CF600 STANDARD TILT HEAD POLE SIZE: STD 14” 	<ul style="list-style-type: none"> FINISH: 7018 PEWTER
UNIVERSAL CABLE MANAGEMENT KIT	<ul style="list-style-type: none"> 30” WIDE 	<ul style="list-style-type: none"> STANDARD: MERLE 6527
LOGY, RECTANGLE 29X70, EXTENDED HEIGHT	<ul style="list-style-type: none"> SQUARE CORNER, ½” GLIDES ACTIVE TOUCH CONTROLLER NO POWER ACCESS / NO GROMMET NO SOFT EDGE / NO OVERHANG / NO RAIL NA POWER 120V, NEMA 1-15 TYPE A-D 	<ul style="list-style-type: none"> TOP SURFACE: ARCTIC WHITE 2730 EDGE: ARCTIC WHITE 6009 BASE: PLATINUM METALLIC 4799
UNIVERSAL 1-HIGH OPEN LATERAL FILE, OLOGY APPLICATION	<ul style="list-style-type: none"> 42 WIDTH FLUSH FRONT / WITH SHROUD WITH HPL TOP 	<ul style="list-style-type: none"> TOP SURFACE: ARCTIC WHITE 2730 EDGE: ARCTIC WHITE 6009 BASE FINISH: 4799 PLATINUM METALLIC
UNIVERSAL 1-1/2 HIGH LATERAL FILE	<ul style="list-style-type: none"> DRAWER/DRAWER, FLUSH STEEL FRONT NO STEEL TOP (CUSHION TOP) INTEGRAL PULL UNIVERSAL 3” BASE DRAWERS W/ RAILS STD CENTRAL LOCKING DWR COUNTERWEIGHT PACKAGE LOCK: SPECIFIC / KEY PLUG / FR SERIES 	<ul style="list-style-type: none"> PAINT: PLATINUM METALLIC 4799 LOCK: POLISHED CHROME 9201 CUSHION TOP: GR.6 TACK CLOTH, GROTTA 3749-403 (HORIZONTAL APPLICATION)
HD STORAGE CABINET, 12W x 24D x 42H	<ul style="list-style-type: none"> NON-CONTRASTING FRONT, NILE PULL WITH PANEL CONNECTOR NO GRAIN DIRECTION NO MAGNETIC BOARD SHELF INTERIOR WITH COAT CLOSET LOCK: SPECIFIC / KEY PLUG / FR SERIES 	<ul style="list-style-type: none"> CASE: ARCTIC WHITE 2730 PULL: PLATINUM METALLIC 4799 INNER: PLATINUM METALLIC 4799 LOCK: POLISHED CHROME 9201
LEAP WORK CHAIR, UPHOLSTERED NON-CONTRASTING	<ul style="list-style-type: none"> STD H/W/P/D/ ADJ. ARMS STD LUMBAR STD 5” PNEUMATIC SEAT HEIGHT RANGE STD OMIT HEADREST SOFT CASTERS 	<ul style="list-style-type: none"> UPHOLSTERY: LINK, BLACK 5A27 PLASTIC FRAME: BLACK 6205
UNIVERSAL STORAGE CABINET (2) – 83-1/2”H (2) – 40”H	<ul style="list-style-type: none"> FLUSH STEEL FRONT 1” STEEL TOP (FOR 83-1/2”H) NO TOP(FOR 40”H) SQUARE EDGE COMMON TOP 84W KEY PLUG / FR SERIES KEYED SPECIFIC 	<ul style="list-style-type: none"> FINISH: PLATINUM METALLIC 4799 LOCK: POLISHED CHROME 9201 COMMON TOP: ARCTIC WHITE 2730 COMMON TOP EDGE: ARCTIC WHITE 6009
UNIVERSAL OTC BIN WITH FLAT FRONT	<ul style="list-style-type: none"> WALL BRACKET ATTACHMENT STD NO ASSIST / STD DOOR DRYWALL TOGGLES FOR WALL MOUNT APP STD LOCK KEY PLUG / FR SERIES / KEYED SPECIFIC 	<ul style="list-style-type: none"> FINISH: PLATINUM METALLIC 4799 LOCK: POLISHED CHROME 9201

INTERCITY TRANSIT, PATTISON EXPANSION
 FUEL WASH FACILITIES BLDG 1ST FL | CONFERENCE 107

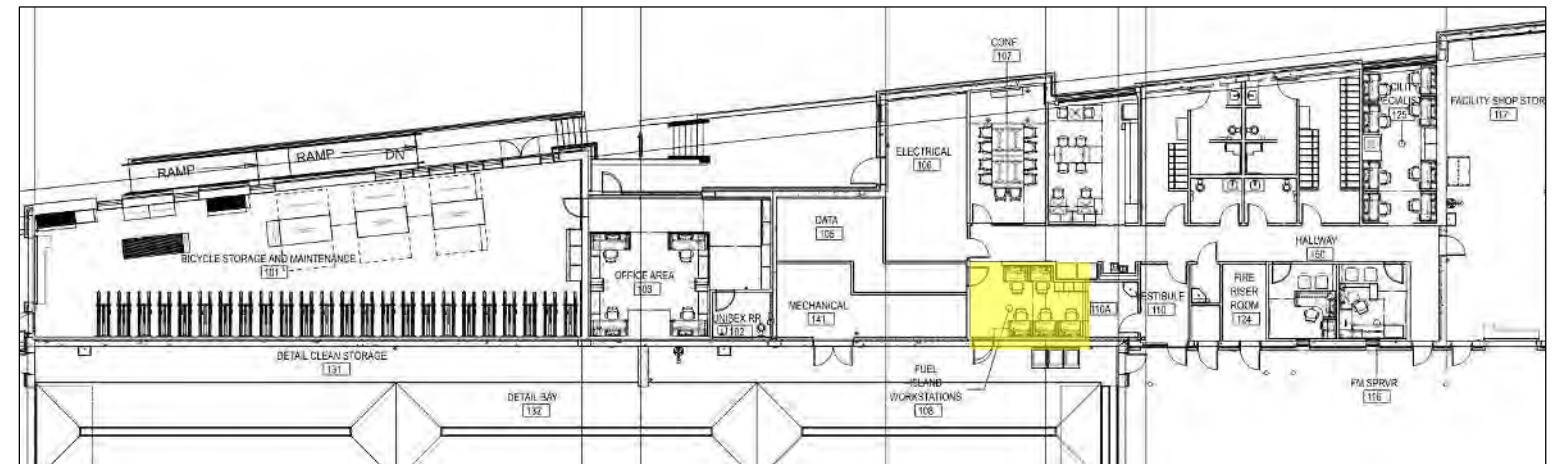
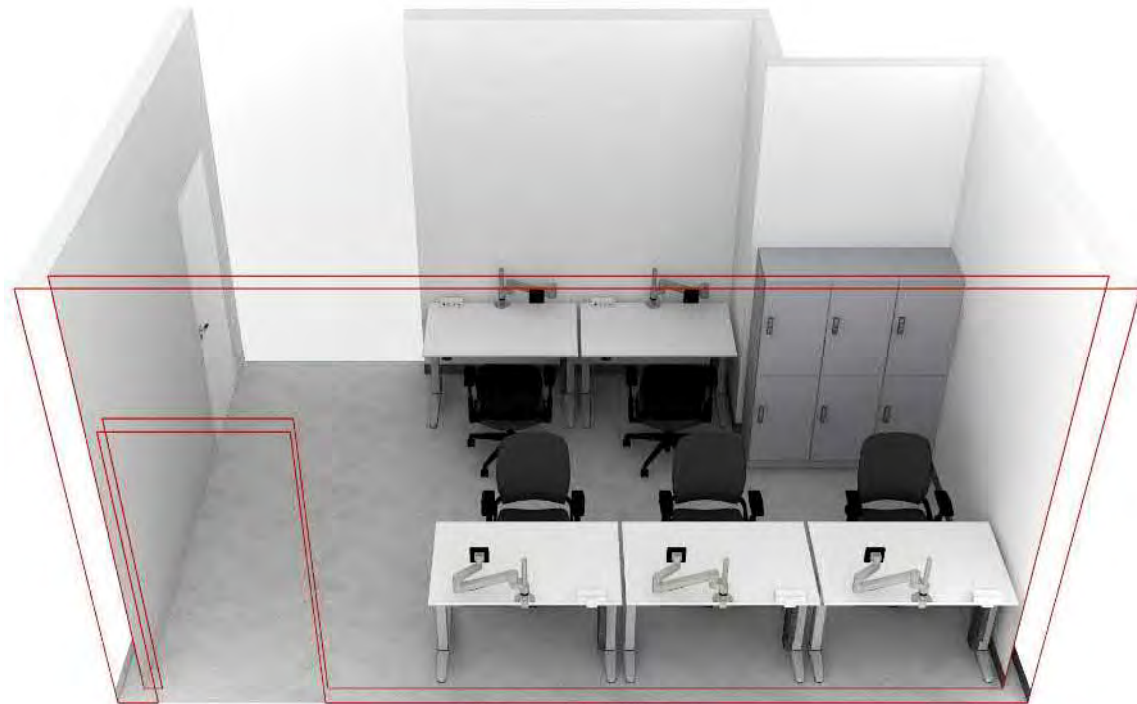


GRAPHITE ARCTIC WHITE GLOSS DESERT OAK PLATINUM METALLIC



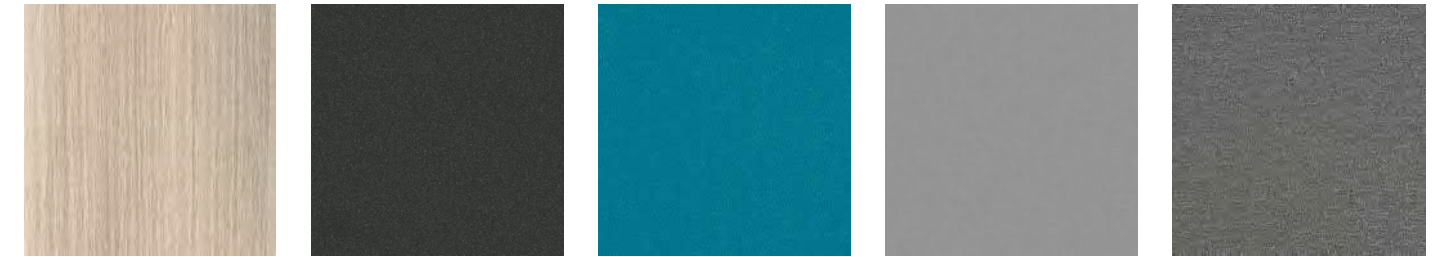
MANUFACTURER	PRODUCT	QUANTITY	DESCRIPTION	MATERIAL(S)
STEELCASE	BIVI TRUNK	1	<ul style="list-style-type: none"> 60"W FREESTANDING LEG SUPPORT 	<ul style="list-style-type: none"> TOP: DESERTOAK 3602 CASE: ARCTIC WHITE 7241 LEG: ARCTIC WHITE GLOSS 4140
STEELCASE	POWER HUB	4	<ul style="list-style-type: none"> STANDARD NEMA 5-15 3-PRONG 9FT PWR CORD - EQUOTE REFERENCE: #AW023214 	<ul style="list-style-type: none"> HUB FINISH: ARCTIC WHITE GLOSS 4140
STEELCASE	AKIRA RECTANGLE FLIP-TOP TABLE	4	<ul style="list-style-type: none"> 30x60, FIXED HEIGHT T-BASE CASTERS FLAT PLASTIC EDGE FLEX GANGERKIT 	<ul style="list-style-type: none"> TOP: ARCTIC WHITE 2730 EDGE: ARCTIC WHITE 6009 BASE: PLATINUM METALLIC 4799
AMQ	TIZU 4-LEG NESTING CHAIR	10	<ul style="list-style-type: none"> MESH BACK, NO ARMS NO GLIDES WITH FULLY ASSEMBLED - NEST 	<ul style="list-style-type: none"> COME STD IN WHITE FRAME AND PLATINUM BASE SEAT COVER: GRAPHITE CC5S25

INTERCITY TRANSIT, PATTISON EXPANSION
 FUEL WASH FACILITIES BLDG 1ST FL | FUEL ISLAND WORKSTATIONS 108

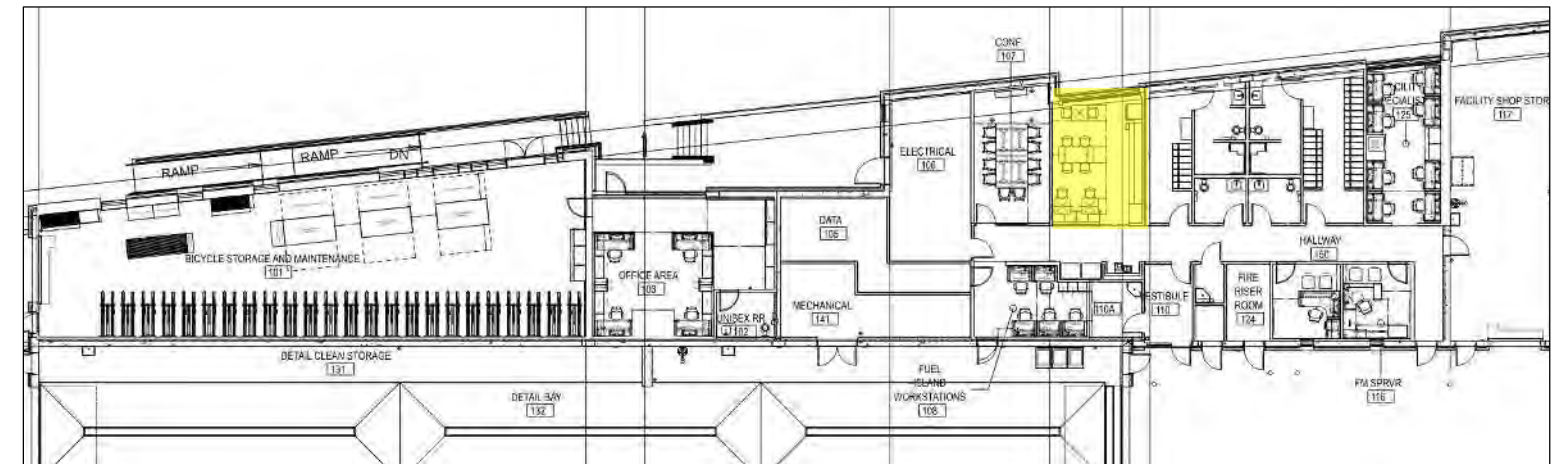


MANUFACTURER	PRODUCT	QUANTITY	DESCRIPTION	MATERIAL(S)
STEELCASE	LOGY, RECTANGLE 29X46, EXTENDED HEIGHT	5	<ul style="list-style-type: none"> SQUARE CORNER, ½" GLIDES ACTIVE TOUCH CONTROLLER NO RAIL / NO POWER ACCESS / NO GROMMET NO SOFT EDGE / NO OVERHANG NORTH AMERICAN POWER 120V, NEMA 1-15 TYPE A-D LOGY CABLE RISER – LEG CONNECTION 	<ul style="list-style-type: none"> TOP SURFACE: ARCTIC WHITE 2730 EDGE: ARCTIC WHITE 6009 BASE: PLATINUM METALLIC 4799
STEELCASE	UNIVERSAL CABLE MANAGEMNET KIT	5	<ul style="list-style-type: none"> 30" WIDE 	<ul style="list-style-type: none"> STANDARD: MERLE 6527
STEELCASE	POWERSTRIP PLUS, C-CLAMP	5	<ul style="list-style-type: none"> CONFIGURATION: 3 PWR / 2 USB-A UNDERWORKSURFACE: 1 UTILITY PWR BLOCK 6' STD POWER CORD / WITH PVC STANDARD NEMA 5-15 3-PRONG PLUG 	<ul style="list-style-type: none"> PLASTIC FINISH: ARCTIC WHITE 6009 CORD: BLACK
STEELCASE	CF SERIES, C-CLAMP, DYNAMIC DUAL MONITOR ARM	5	<ul style="list-style-type: none"> WEIGHT SUPPORTED: 5-17LBS / CF600 STANDARD TILT HEAD / POLE SIZE: STD 14" 	<ul style="list-style-type: none"> FINISH: PEWTER 7018
STEELCASE	LEAP WORK CHAIR, UPHOLSTERED NON-CONTRASTING	5	<ul style="list-style-type: none"> STD H/W/P/D/ ADJ. ARMS STD LUMBAR STD 5" PNEUMATIC SEAT HEIGHT RANGE STD OMIT HEADREST SOFT CASTERS 	<ul style="list-style-type: none"> UPHOLSTERY: LINK, BLACK 5A27 PLASTIC FRAME: BLACK 6205
STEELCASE	TS SERIES DOUBLE DOOR LOCKER, 18W x 65.5H x 18D	3	<ul style="list-style-type: none"> RIGHT DOOR HINGE ELECTRONIC LOCK, NO PULL 	<ul style="list-style-type: none"> PAINT: PLATINUM METALLIC 4799

INTERCITY TRANSIT, PATTISON EXPANSION
 FUEL WASH FACILITIES BLDG 1ST FL | BREAKROOM 109



ACACIA MERLE SILICONE ELEMENT, AZURE COOL GREY LUSTER, AFFINITY



MANUFACTURER	PRODUCT	QUANTITY	DESCRIPTION	MATERIAL(S)
STEELCASE	UNIVERSAL SQUARE TABLE	3	<ul style="list-style-type: none"> • 3MM EDGE PROFILE • 30X30 • X-BASE 	<ul style="list-style-type: none"> • TOP: ACACIA 2HAT • EDGE: ACACIA 6213 • BASE/COLUMN: MERLE 7360
STEELCASE	UNIVERSAL STRAIGHT TABLE	1	<ul style="list-style-type: none"> • 3MM EDGE PROFILE • 30X65-3/4 • STD NO REINFORCING CHANNEL • T-BASE 	<ul style="list-style-type: none"> • TOP: ACACIA 2HAT • EDGE: ACACIA 6213 • BASE/COLUMN: MERLE 7360
STEELCASE	REGARD, SINGLE SIDED SEATING	1	<ul style="list-style-type: none"> • 88W • WITH GLASS SCREEN • 20D x 22W CUSHION (4) 	<ul style="list-style-type: none"> • BASE FRAME: MERLE 7360 • SCREEN BRACKET: PLATINUM METALLIC 4799 • SEAT/BACK: GR.6 DESIGNTEX LUSTER AFFINITY (HORIZONTAL)
COALESSE	ENEA LOTTUS, SIDE CHAIR	8	<ul style="list-style-type: none"> • NO ARMS • UPHOLSTERED INSERT • FABRIC BACKER NOT REQUIRED • WITH FFI T GLIDES 	<ul style="list-style-type: none"> • METAL FRAME: OBSIDIAN 4B20 • POLYPROPYLENE: COOL GREY 0017 • UPHOLSTERY: GR.11 DESIGNTEX SILICON ELEMENT, AZURE (HORIZONTAL APPLICATION)

Product Line: REGARD

Pattern	Grade	Default Direction	Horizontal	Vertical	Contains FR	Firecode (CAL TB133)
LUSTER	6	H	Pass	Fail	N	None

Textile Manufacturer: DESIGNTEX GROUP INC Product: MULTIPURPOSE/GUEST SIDE Family: ENEA LOTTUS
 Model: COEL100UPH
*Consult Customer Service for additional upcharge for backing or Cal133. Textile list approved for application only. For CAL 133 pre-approvals, refine search criteria.

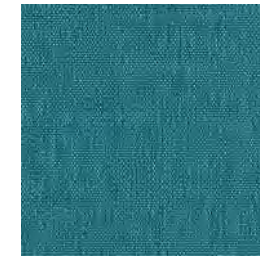
Fabric Variance Guide
 ⚠ Caution -- Review textile limitations carefully.
 🚫 Icon indicates textile has been discontinued.

Textile Manufacturer	Pattern Name	Pattern Number	Grade	Standard Textile Application	Rating	Caution
DESIGNTEX GROUP INC	SILICONE ELEMENT	3919	11	HORIZONTAL/RAILROAD	PASS	

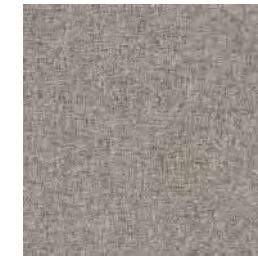
INTERCITY TRANSIT, PATTISON EXPANSION
 FUEL WASH FACILITIES BLDG 1ST FL | PRIVATE OFFICES 116A & 116B



FAWN CYPRESS



BIRDSEYE, BLUE CORAL



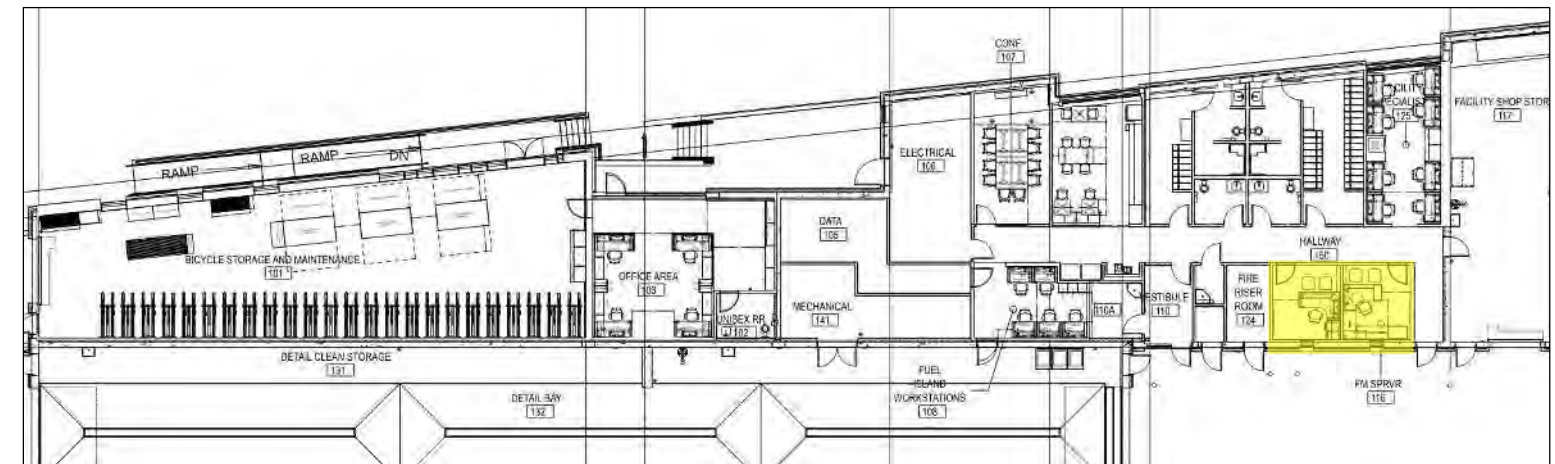
BRUSHED FLANNEL,
MEDIUM GREY



LINK, BLACK



MERLE



MANUFACTURER	PRODUCT	QUANTITY	DESCRIPTION	MATERIAL(S)
STEELCASE	POWERSTRIP PLUS, C-CLAMP	1 / PER OFFICE	<ul style="list-style-type: none"> CONFIGURATION: 3 PWR / 2 USB-A UNDERWORKSURFACE: 1 UTILITY PWR BLOCK 6' STD POWER CORD / WITH PVC STANDARD NEMA 5-15 3-PRONG PLUG 	<ul style="list-style-type: none"> PLASTIC FINISH: MERLE 6527 CORD: BLACK
STEELCASE	CF SERIES, C-CLAMP, DYNAMIC DUAL MONITOR ARM	1 / PER OFFICE	<ul style="list-style-type: none"> WEIGHT SUPPORTED: 5-17LBS / CF600 STANDARD TILT HEAD / POLE SIZE: STD 14" 	<ul style="list-style-type: none"> FINISH: BLACK 0835
STEELCASE	UNIVERSAL CABLE MANAGEMNET KIT	1 / PER OFFICE	<ul style="list-style-type: none"> 30" WIDE 	<ul style="list-style-type: none"> STANDARD: MERLE 6527
STEELCASE	PLASTIC CENTER DRAWER	1 (FOR FIXED CORNER DESK)	<ul style="list-style-type: none"> 19"D x 21"W 	<ul style="list-style-type: none"> STD BLACK
STEELCASE	DASH LED TASK LIGHT	1 / PER OFFICE	<ul style="list-style-type: none"> FREESTANDING BASE 	<ul style="list-style-type: none"> LOW GLOSS BLACK 4710
STEELCASE	PREMIUM WHITEBOARD	1 / PER OFFICE	<ul style="list-style-type: none"> CERAMIC SURFACE, EDGE SERIES 36.25 x 48.25 WALL MOUNT / WITH TRAY 	<ul style="list-style-type: none"> SURFACE: E3 ENVIRONMENTAL CERAMICSTEEL 7655 TRIM: CLEAR ANODIZED ALUM 8043
STEELCASE	LEAP WORK CHAIR, UPHOLSTERED NON-CONTRASTING	1 / PER OFFICE	<ul style="list-style-type: none"> STD H/W/P/D/ ADJ. ARMS STD LUMBAR STD 5" PNEUMATIC SEAT HEIGHT RANGE STD OMIT HEADREST SOFT CASTERS 	<ul style="list-style-type: none"> UPHOLSTERY: LINK, BLACK 5A27 PLASTIC FRAME: BLACK 6205
COALESSE	BINDU CHAIR	2 / PER OFFICE	<ul style="list-style-type: none"> LOW BACK WITH FABRIC BACKER 	<ul style="list-style-type: none"> BASE: BLACK GLOSS 4144 UPHOLSTERY: GR.8 BRUSHED FLANNEL, MEDIUM GREY 3797-802
STEELCASE	UNIVERSAL ITC BIN WITH FLAT FRONT	(1)36W & (1) 42W	<ul style="list-style-type: none"> WOOD DOOR / LAMINATE FRONT STD NO OPTIONAL BRACKETS STD LOCK / KEYED SPECIFC / KEY PLUG / FR SERIES STD NO ASSIST MECHANISM WALL CHANNEL APPLICATION 	<ul style="list-style-type: none"> WALL CHANNEL: MERLE 7360 BIN BASIC FINISH: MERLE 7360 LOCK: EMBER CHROME 9250 FRONT: HPL FAWN CYPRESS 2TH2
STEELCASE	TACKBOARD	(1)36W & (1) 42W	<ul style="list-style-type: none"> FOR WALL CHANNEL APPLICATION 	<ul style="list-style-type: none"> FINISH: GR.2 DESIGNTEX BIRDSEYE BLUE CORAL 4142-404

INTERCITY TRANSIT, PATTISON EXPANSION
 FUEL WASH FACILITIES BLDG 1ST FL | PRIVATE OFFICES 116A & 116B CONT.

MANUFACTURER CONT.	PRODUCT CONT.	QUANTITY CONT.	DESCRIPTION CONT.	MATERIAL(S) CONT.
STEELCASE	UNIVERSAL LATERAL FILE 36W	1 (IN U-SHAPE OFFICE)	<ul style="list-style-type: none"> NO TOP JAZZ PULL / LAMINATE FRONT KEYED SPECIFIC / KEY PLUG / FR SERIES STD DRAWERS WITH RAILS UNIVERSAL COUNTERWEIGHT STD CENTRAL LOCKING DWR UNIVERSAL 3" BASE 	<ul style="list-style-type: none"> BASIC FINISH: MERLE 7360 LOCK: EMBER CHROME 9250 PULL: BLACK 0835 FRONT: FAWN CYPRESS 2TH2
STEELCASE	UNIVERSAL FIXED PEDESTAL	1 / PER OFFICE	<ul style="list-style-type: none"> BOX/BOX/FILE (1 IN U-SHAPE OFFICE) FILE/FILE (1 IN L-SHAPE OFFICE) JAZZ PULL / LAMINATE FRONT STD SINGLE LOCK / KEYED SPECIFIC / KEY PLUG / FR SERIES STD DRAWERS WITH RAILS STD FULL DRAWER 	<ul style="list-style-type: none"> BASIC FINISH: MERLE 7360 LOCK: EMBER CHROME 9250 PULL: BLACK 0835 FRONT: FAWN CYPRESS 2TH2
STEELCASE	UNIVERSAL MOBILE PEDESTAL	1 / PER OFFICE	<ul style="list-style-type: none"> BOX/FILE JAZZ PULL / LAMINATE FRONT CUSHION TOP W HANDLE STD DRAWERS WITH RAILS STD FULL DRAWER STD SINGLE LOCK / KEYED SPECIFIC / KEY PLUG / FR SERIES 	<ul style="list-style-type: none"> BASIC FINISH: MERLE 7360 LOCK: EMBER CHROME 9250 PULL: BLACK 0835 FRONT: FAWN CYPRESS 2TH2 CUSHION: DESIGNTEX BRUSHED FLANNEL W/ ACRYLIC BACK, MEDIUM GREY 3797-802403 (HORIZONTAL APPLICATION)
STEELCASE	UNIVERSAL STRAIGHT WORKSURFACE	2 (U-SHAPE OFFICE) 1 (L-SHAPE OFFICE)	<ul style="list-style-type: none"> 3MM PLASTIC EDGE PROFILE FULL DEPTH / NO CORD DROP WITH SCALLOP NO GROMMET NO POWER ACCESS SUPPORTS: C-LEG, RC, POST LEG, TIE PLATE, AND UNIV. STORAGE 	<ul style="list-style-type: none"> TOP: FAWN CYPRESS 2TH2 (SHORT GRAIN FOR RETURN ONLY, OTHERWISE LONG GRAIN) EDGE: FAWN CYPRESS 6T02 SUPPORT: MERLE 7360
STEELCASE	UNIVERSAL CURVED, EXTENDED CORNER	1 (U-SHAPE OFFICE)	<ul style="list-style-type: none"> 3MM PLASTIC EDGE PROFILE OMIT SCALLOPS FULL DEPTH, NO CORD DROP CORNER SUPPORT / FULL HEIGHT MODESTY PANEL 	<ul style="list-style-type: none"> TOP: FAWN CYPRESS 2TH2 (LONG GRAIN) EDGE: FAWN CYPRESS 6T02 SUPPORT: MERLE 7360 MODESTY: MERLE 7360
STEELCASE	OLOGY 3-LEG BASE – 90 DEGREE	1 (L-SHAPE OFFICE)	<ul style="list-style-type: none"> EXTENDED HEIGHT, SQUARE CORNER, 1/2" GLIDES ACTIVE TOUCH CONTROLLER NO RAIL / NO POWER ACCESS / NO GROMMET NA 120, NEMA 1-15 TYPE A-D OLOGY MODESTY, DESK APPLICATION OLOGY CABLE RISER, LEG CONNECTION 	<ul style="list-style-type: none"> TOP SURFACE: FAWN CYPRESS 2TH2 (LONG GRAIN) MODESTY: FAWN CYPRESS 2TH2 (VERTICAL) EDGE: FAWN CYPRESS 6T02 BASE: MERLE 7360

Textile Manufacturer: DESIGNTEX GROUP INC Product: CONFERENCE CHAIRS Family: BINDU Model: CO200G
 *Consult Customer Service for additional upcharge for backing or Cal133. Textile list approved for application only. For CAL 133 pre-approvals, refine search criteria.

Caution – Review textile limitations carefully.
 Icon indicates textile has been discontinued.

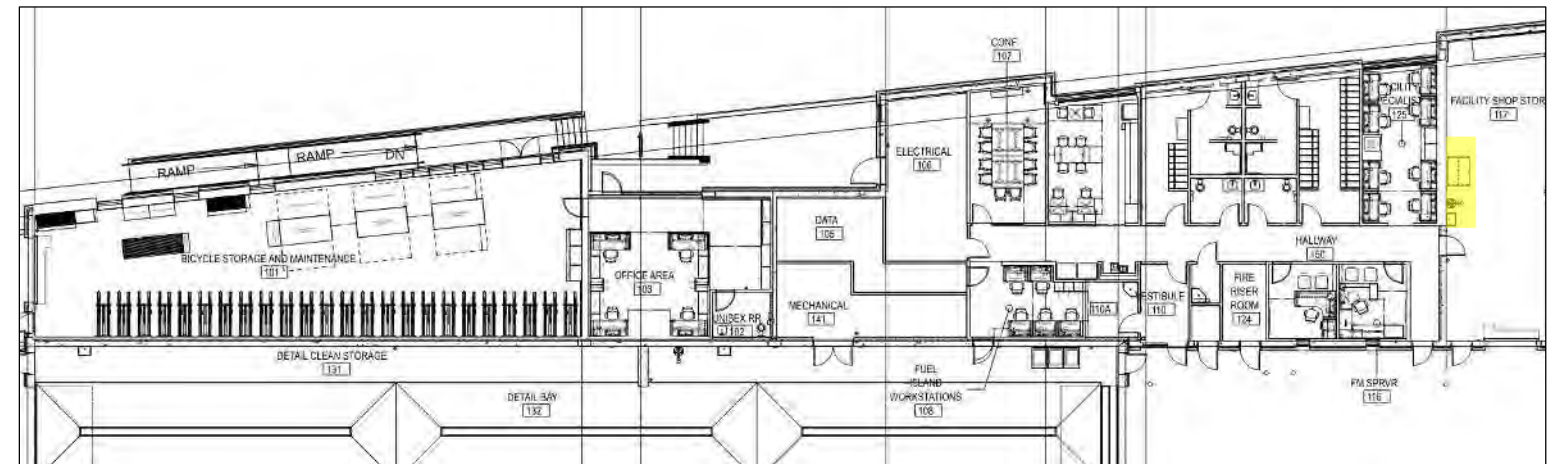
Textile Manufacturer	Pattern Name	Pattern Number	Grade	Standard Textile Application	Rating	Caution	Exception	Messages
DESIGNTEX GROUP INC	BRUSHED FLANNEL	3797	8	HORIZONTAL/RAILROAD	PASS	BACKING		Backing recommended. Additional lead time and upcharges apply

Product Line: UNIVERSAL MOBILE PED

Pattern	Grade	Default Direction	Horizontal	Vertical	Contains FR	Firecode (CAL TB133)
BRUSHED FLANNEL W/ ACRYLIC BACK		H	Pass	Pass	N	None

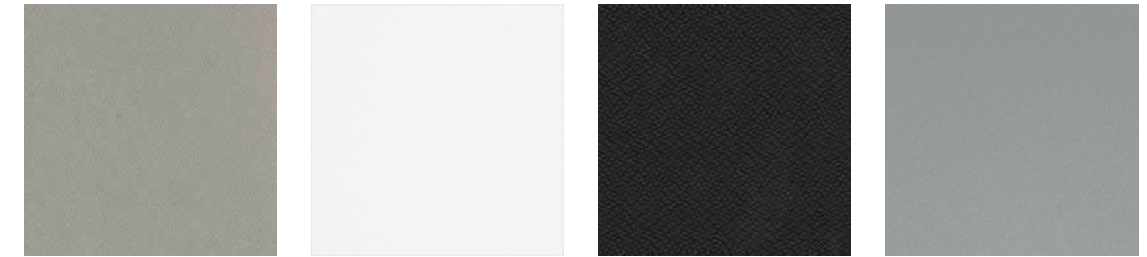


GRAY

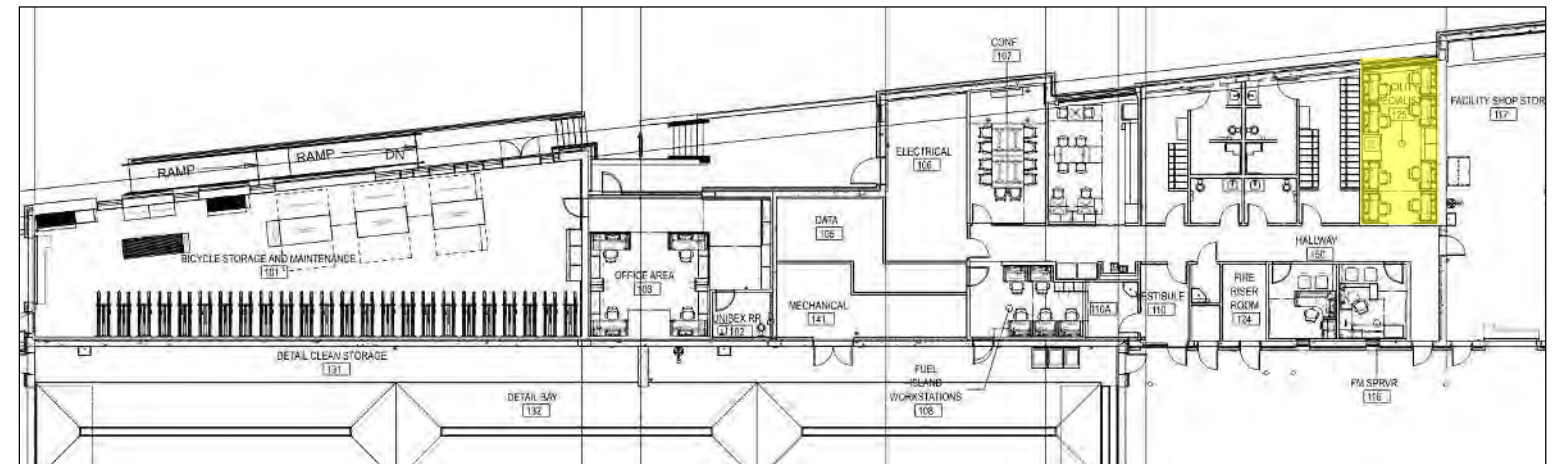


MANUFACTURER	PRODUCT	QUANTITY	DESCRIPTION	MATERIAL(S)
SAFCO	STEEL FLAT FILE 4998	1	<ul style="list-style-type: none"> • 5-DRAWER • FOR 36"X48" DOCUMENTS • CONFIGURED 	<ul style="list-style-type: none"> • PAINT: GRAY
SAFCO	FLAT FILE BASE 4979	1	<ul style="list-style-type: none"> • HIGH, OPEN BASE • CONFIGURED 	<ul style="list-style-type: none"> • PAINT: GRAY

INTERCITY TRANSIT, PATTISON EXPANSION
 FUEL WASH FACILITIES BLDG 1ST FL | FACILITY SPECIALISTS 125



PEWTER ARCTIC WHITE LINK, BLACK PLATINUM METALLIC



MANUFACTURER	PRODUCT	QUANTITY	DESCRIPTION	MATERIAL(S)
STEELCASE	LOGY, RECTANGLE 29X58, BASIC HEIGHT	8	<ul style="list-style-type: none"> SQUARE CORNER, ½" GLIDES ACTIVE TOUCH CONTROLLER NO RAIL / NO POWER ACCESS / NO GROMMET NO SOFT EDGE / NO OVERHANG NORTH AMERICAN POWER 120V, NEMA 1-15 TYPE A-D LOGY CABLE RISER – LEG CONNECTION 	<ul style="list-style-type: none"> TOP SURFACE: ARCTIC WHITE 2730 EDGE: ARCTIC WHITE 6009 BASE: PLATINUM METALLIC 4799
STEELCASE	UNIVERSAL CABLE MANAGEMNET KIT	8	<ul style="list-style-type: none"> 30" WIDE 	<ul style="list-style-type: none"> STANDARD: MERLE 6527
STEELCASE	POWERSTRIP PLUS, C-CLAMP	8	<ul style="list-style-type: none"> CONFIGURATION: 3 PWR / 2 USB-A UNDERWORKSURFACE: 1 UTILITY PWR BLOCK 6' STD POWER CORD / WITH PVC STANDARD NEMA 5-15 3-PRONG PLUG 	<ul style="list-style-type: none"> PLASTIC FINISH: ARCTIC WHITE 6009 CORD: BLACK
STEELCASE	CF SERIES, C-CLAMP, DYNAMIC DUAL MONITOR ARM	8	<ul style="list-style-type: none"> WEIGHT SUPPORTED: 5-17LBS / CF600 STANDARD TILT HEAD / POLE SIZE: STD 14" 	<ul style="list-style-type: none"> FINISH: PEWTER 7018
STEELCASE	TS SERIES SLIM MOBILE PEDESTAL, NO CUSHION	8	<ul style="list-style-type: none"> CONTEMPORARY PULL SMALL CASTERS DRAWER ACCESS 2 SIDED KEY PLUG / FR SERIES KEYED SPECIFIC 	<ul style="list-style-type: none"> FINISH: PLATINUM METALLIC 4799 PULL FINISH: BLACK 0835 LOCK: POLISHED CHROME 9201
STEELCASE	LEAP WORK CHAIR, UPHOLSTERED NON-CONTRASTING	8	<ul style="list-style-type: none"> STD H/W/P/D/ ADJ. ARMS STD LUMBAR STD 5" PNEUMATIC SEAT HEIGHT RANGE STD OMIT HEADREST SOFT CASTERS 	<ul style="list-style-type: none"> UPHOLSTERY: LINK, BLACK 5A27 PLASTIC FRAME: BLACK 6205
STEELCASE	UNIVERSAL LATERAL FILE 24Dx30Wx65.5H, FLUSH STEEL FRONT	2	<ul style="list-style-type: none"> 1 LIFT UP DOOR / FIXED SHELF + 4 DRAWERS 1" STEEL TOP DRAWER INTERIORS: HANGING FOLDER BARS WITH COUNTERWEIGHT PACKAGE STD CENTRAL LOCKING DWR KEY PLUG / FR SERIES KEYED SPECIFIC 	<ul style="list-style-type: none"> FINISH: PLATINUM METALLIC 4799 LOCK: POLISHED CHROME 9201