

# Public Hearing

## September 2020 Service Change Proposal

Rob LaFontaine  
Planning Manager

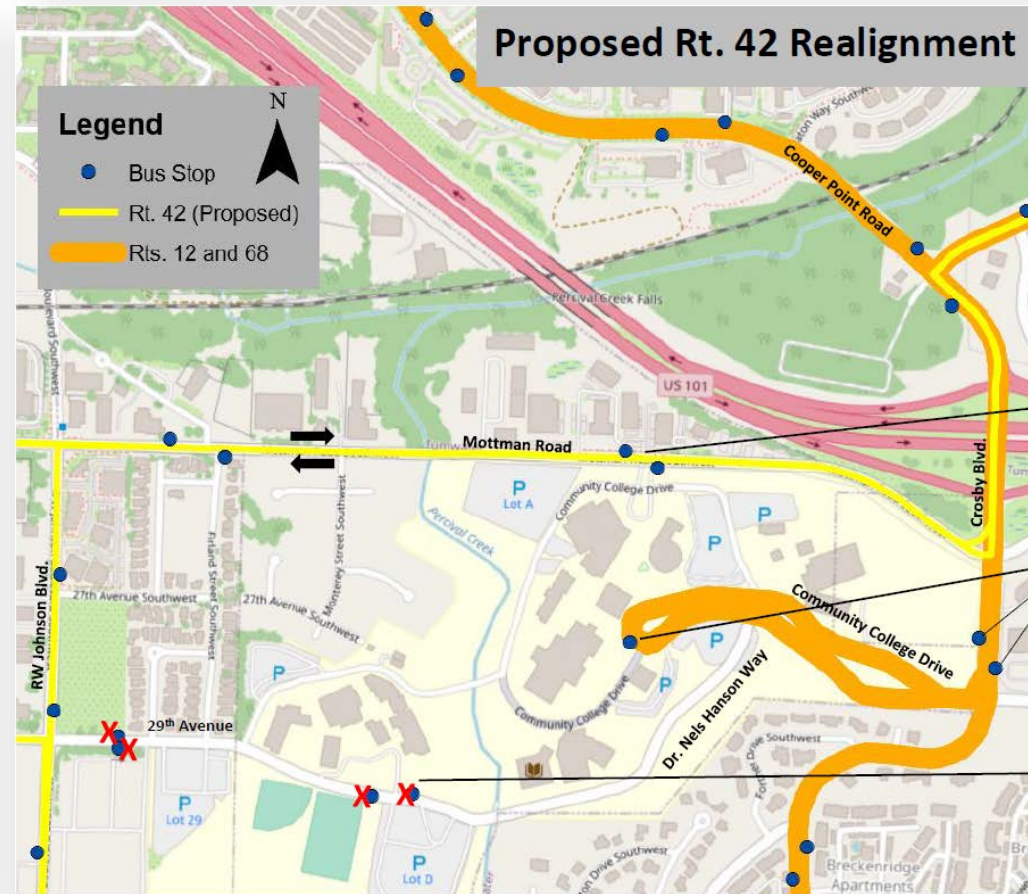
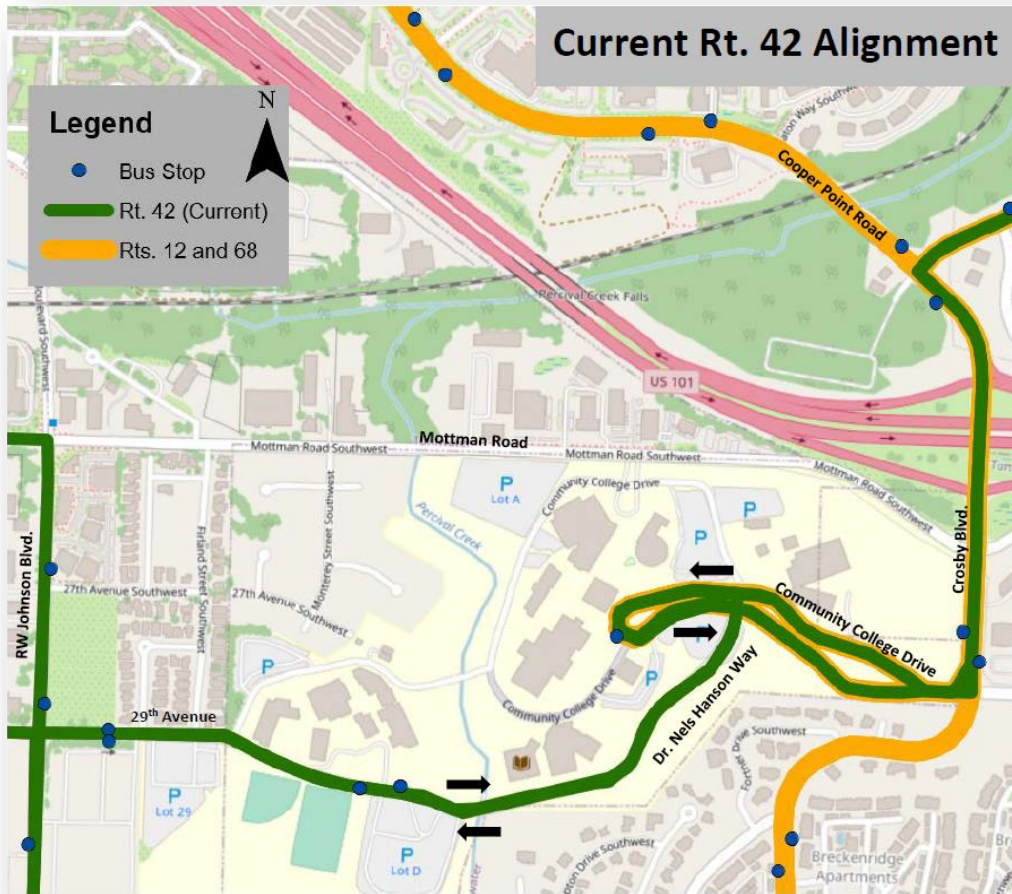
Presented to the Authority Board June 3, 2020

# Goal:

## *Focus on Getting Back to Normal*

- Minor adjustments to time-points
  - Routes: 45, 60, 62A, 62B, 67, 94, DASH)
- Proposal to change access to the Route 42 at SPSCC
- Revenue Service Hours remain neutral

# Route 42 Proposal: Transfer access from the campus, onto Mottman Road

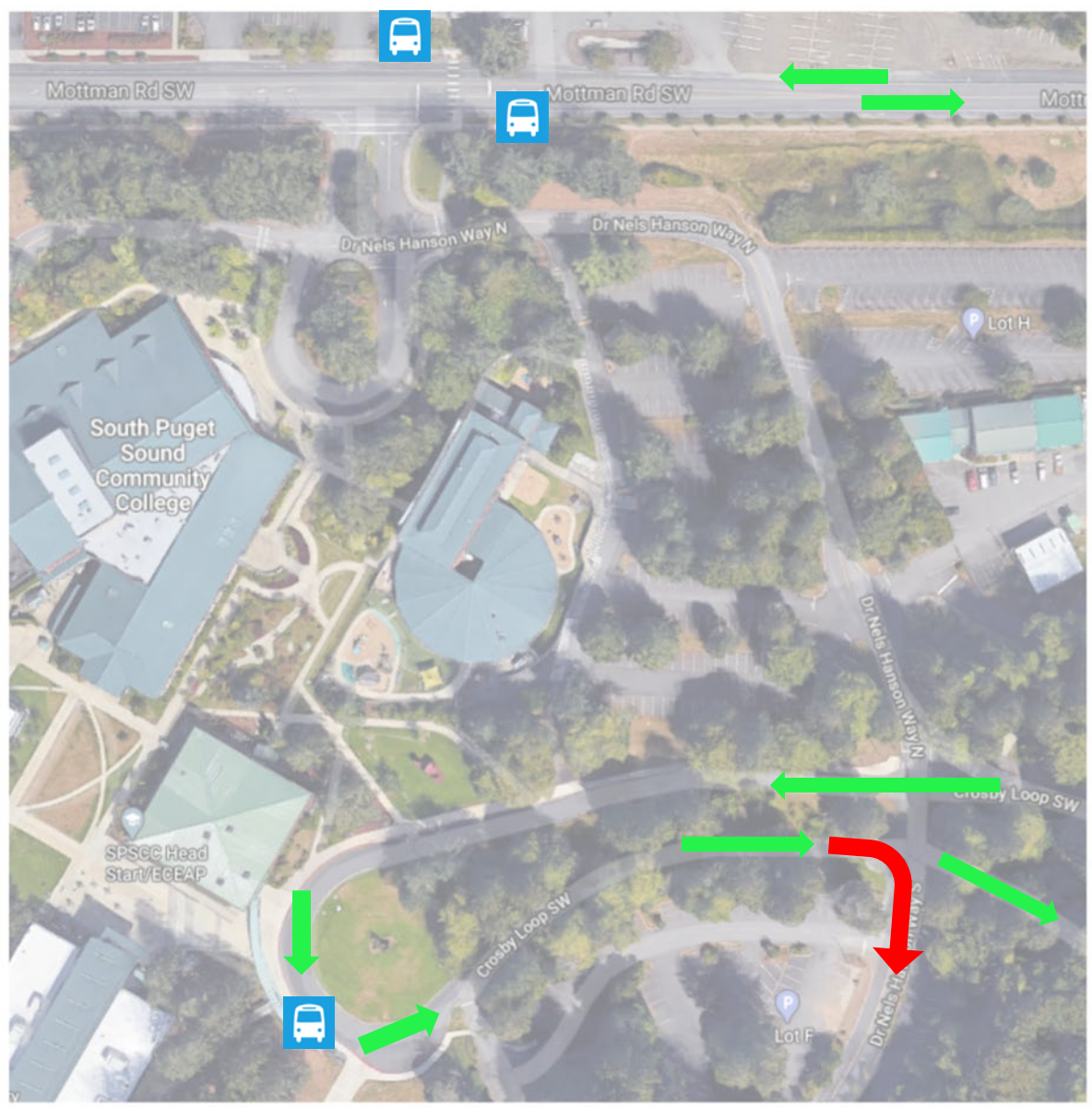


New stops and lighted crosswalk

Rts. 12 and 68 would continue to serve these stops. Rerouted 42 would serve new stops on Mottman Road

Stops with a red X would be eliminated.







2120 Mottman Rd SW

Olympia, Washington

Google

Street View

Existing  
Illumination

Proposed Stop  
to OTC

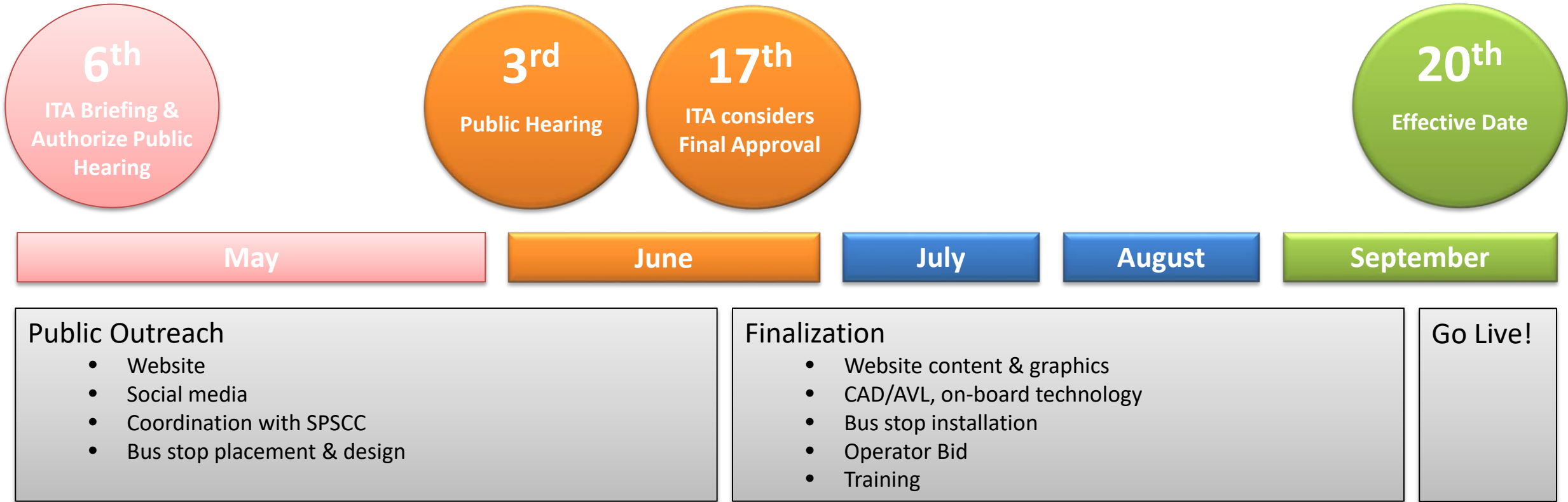


Barrier-free accessible  
pedestrian pathway



Google

# Timeline





# Public Hearing

## September 2020 Service Change Proposal

Rob LaFontaine  
Planning Manager

Presented to the Authority Board June 3, 2020