

Sunday, June 21, 2020

Restoration of Fixed Route Service

Rob LaFontaine
Planning Manager

Presented to the Authority Board June 17, 2020

Summary of *Restoration Service*

- **17 of 22 active Bus Routes**
 - Inactive Routes: The One, DASH, Nightline, 612, 620
- **Service available generally 8:30 AM to 8:30 PM with most routes operating on a 60 minute schedule**
 - *Advance Reservation* service to remain as a supplement
- **Approximately $\frac{1}{3}$ of regularly scheduled weekday service**
 - Design: modified version of the adopted March 2020 *Weekend* schedule

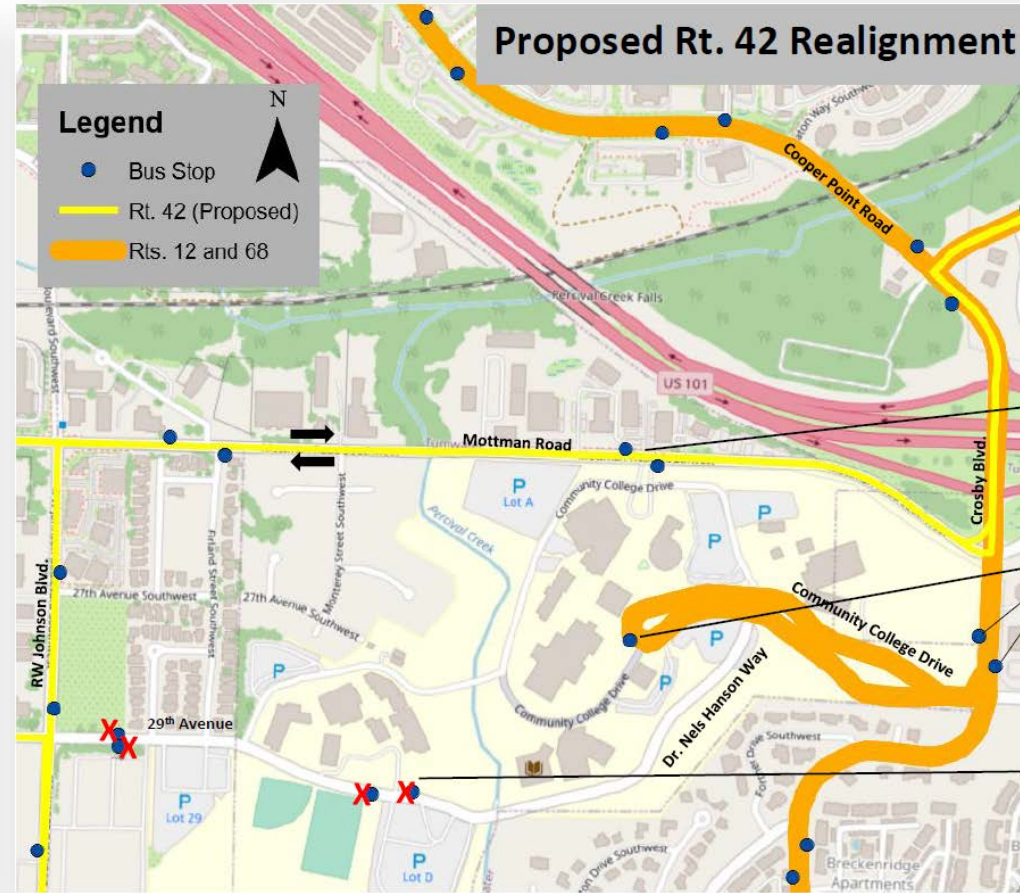
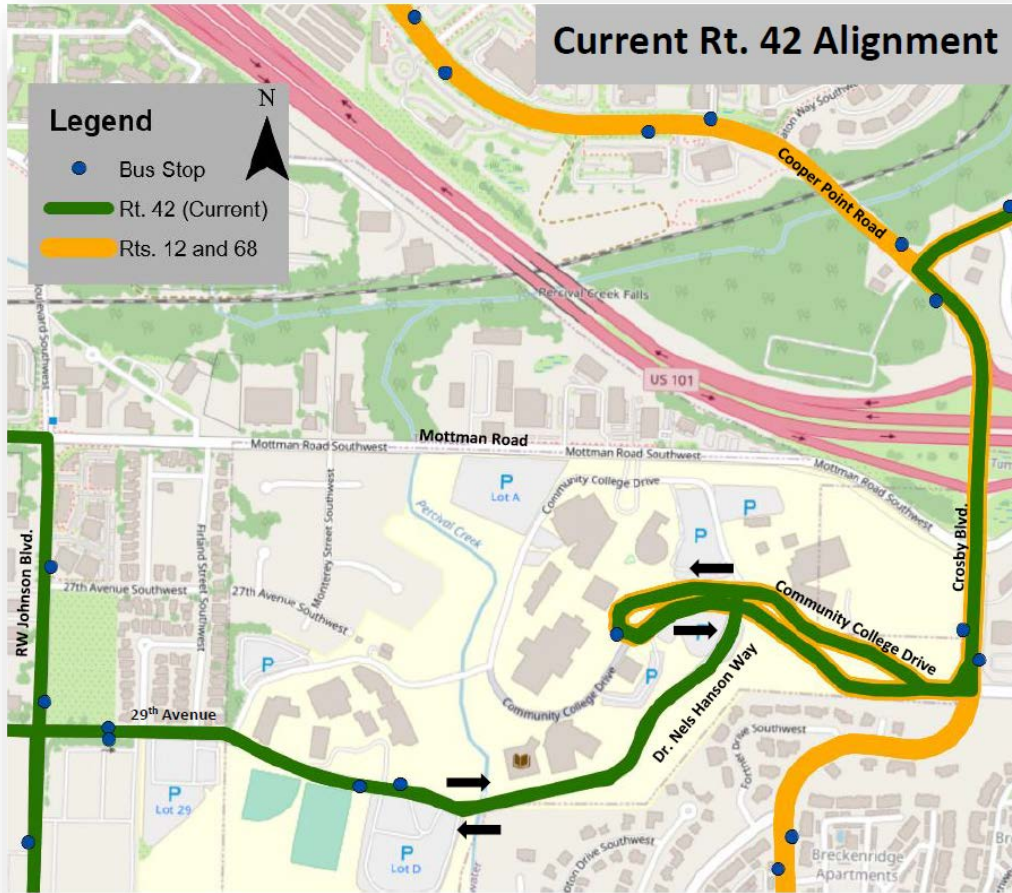
Sunday, September 20, 2020
Service Change Package – Final Approval

Rob LaFontaine
Planning Manager
Presented to the Authority Board June 17, 2020

A Focus on Getting Back to Normal

- Minor adjustments to time-points
 - Routes: 45, 60, 62A, 62B, 67, 94, DASH)
- Proposal to change access to the Route 42 at SPSCC
- Revenue Service Hours remain neutral

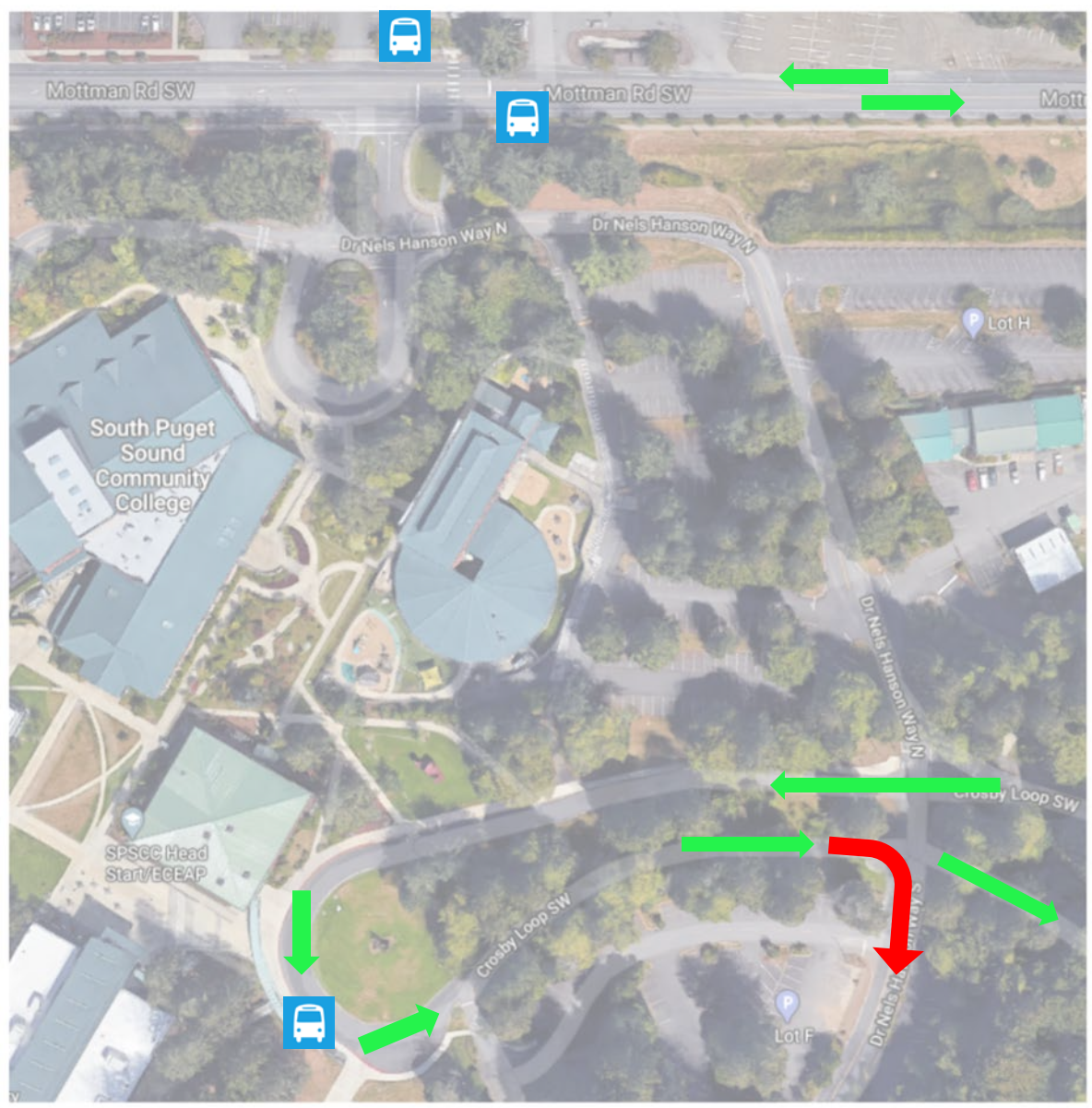
Route 42 Proposal: Transfer access from the campus, onto Mottman Road



New stops and lighted crosswalk

Rts. 12 and 68 would continue to serve these stops. Rerouted 42 would serve new stops on Mottman Road

Stops with a red X would be eliminated.



2120 Mottman Rd SW

Olympia, Washington

Google

Street View

Existing
Illumination

Proposed Stop
to OTC

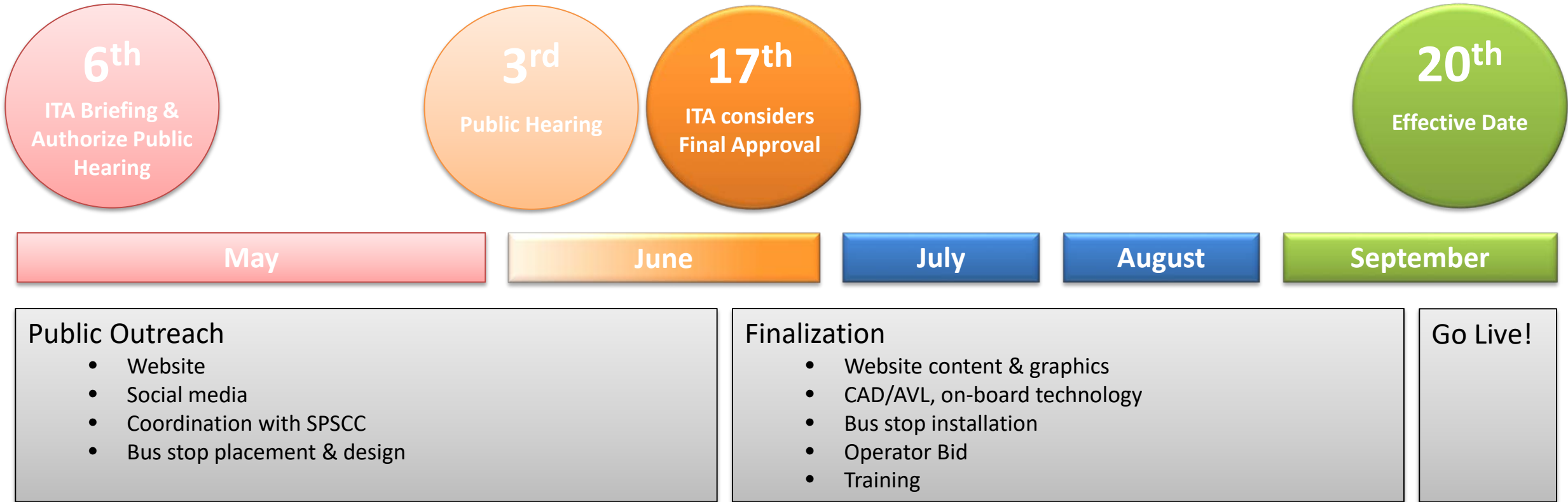


Barrier-free accessible
pedestrian pathway



Google

Timeline



Final Approval

September 2020 Service Change Package

Rob LaFontaine
Planning Manager

Presented to the Authority Board June 17, 2020